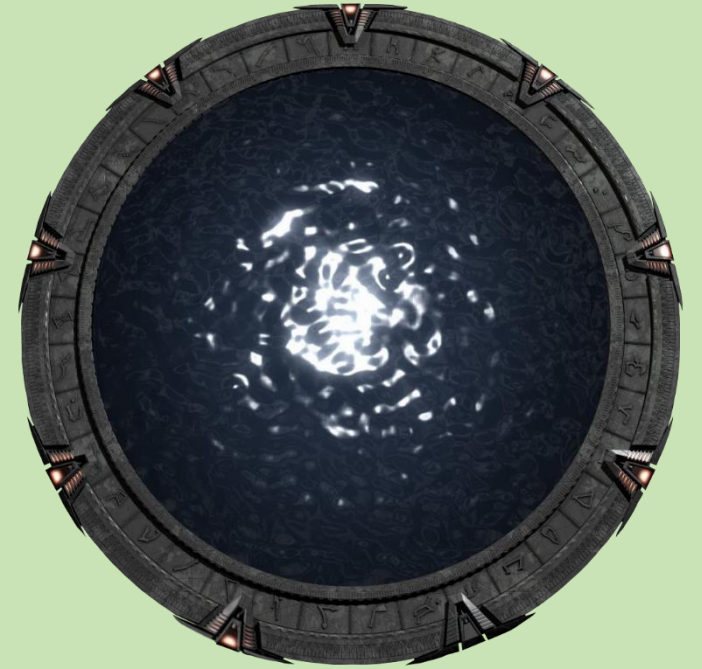


# Star Gateway Portals



# Star Gateway Portals



**Star Gateway Portals are teleportation devices that allow beings to travel through time and space to other planets, galaxies and dimensions in the universe.**





# Star Gateway Portals



The Star Gateway portals open up wormholes in space and time creating an interdimensional hub portal on the surface of planets in order to be able to travel off planet to other worlds and galaxies. There are mathematical and letter computer coordinates which are dialed from a gateway computer dialing pad in order to activate the star gates to travel either to planetary locations or off world. The portals in the left hand side images were created by the first builder/creator race called the EL's, they were 10th dimensional beings and could physically manifest anything that they wanted with just thought forms coming from their minds.



# Star Gateway Portals



**Star Gateway portal  
computer dialing pad**





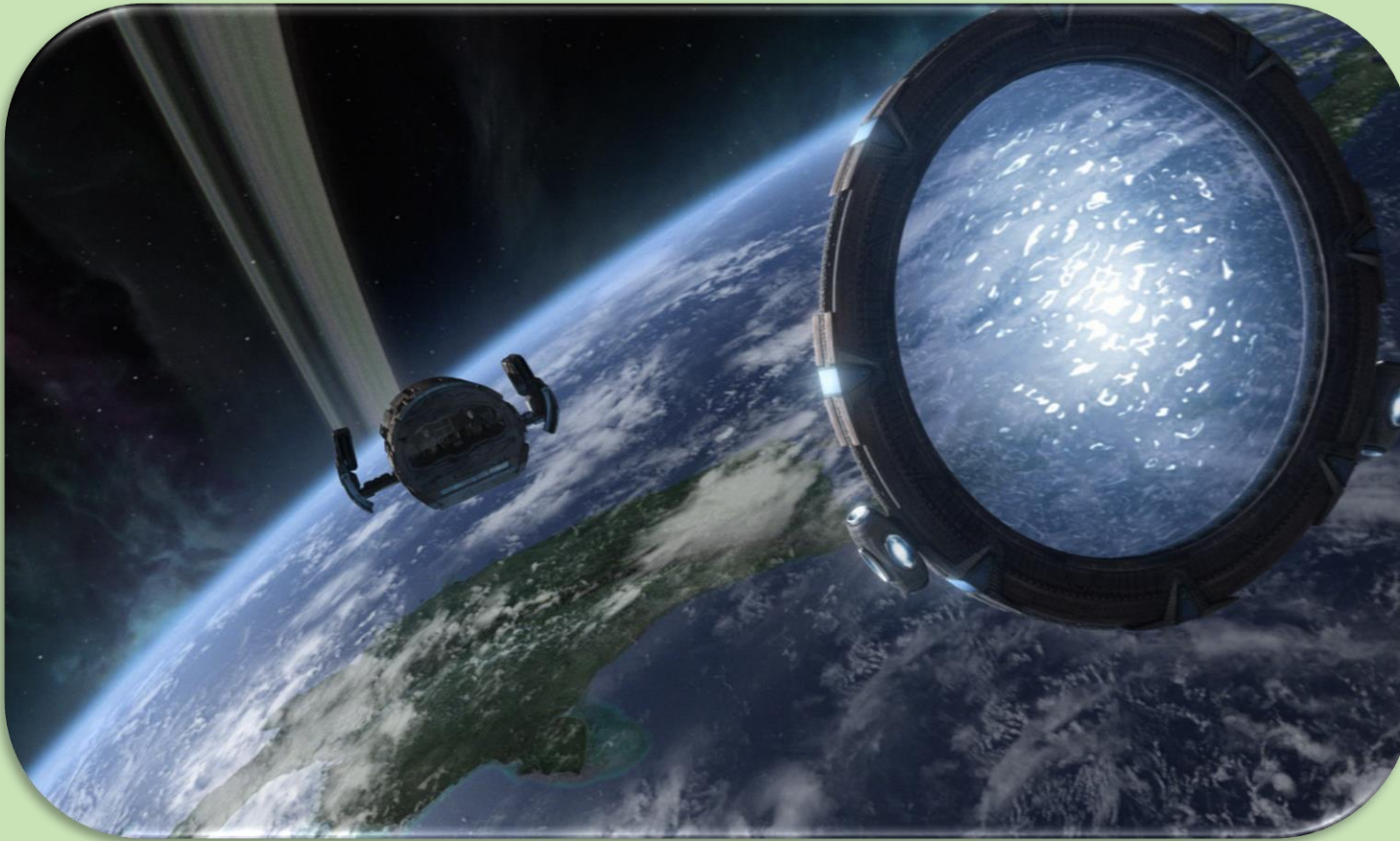
# Star Gateway Portals



There are star gateway portals that are built underwater and they can be used in the oceans for ships to go in and out through waterway portals so they are not detected on the surface of planets. These star portals can rise from the water and can be stationed on land as well to be utilized there. Most star gateway portals can be moved by using tractor beams to place them on planets where they are needed for teleportation and transportation purposes.



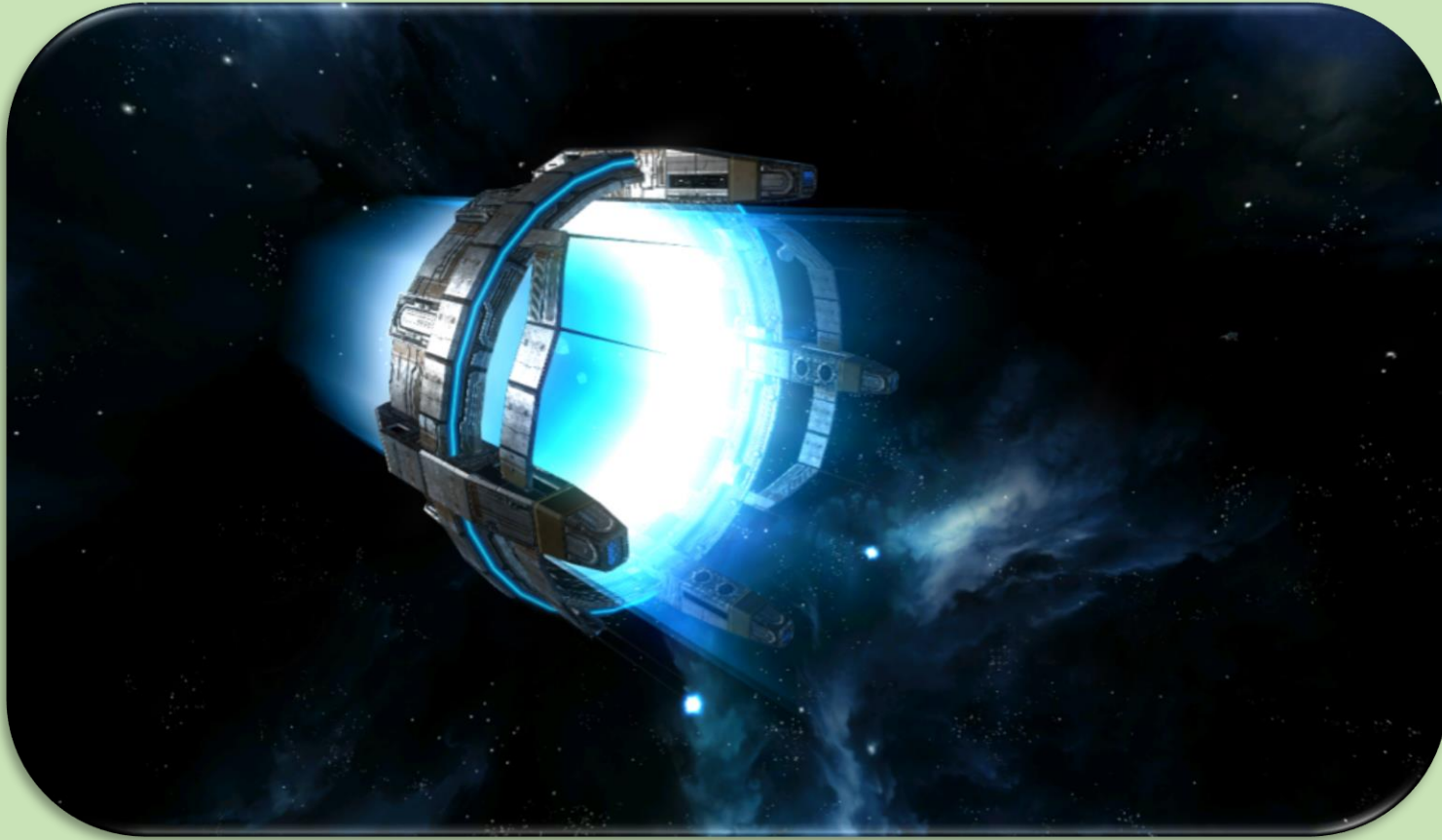
# Star Gateway Portals



Some star gateway portals exist in outer space orbiting planets so they act as jump way gateways for ships to leave the galaxy and travel to other points in the universe. These portal gateways utilize plasma and mass fusion generator devices to power the portals for quick travel. Often time's larger craft and mother ships will use these portals for space travel as these bigger ships at times will not fit through the smaller planetary portals.



# Star Gateway Portals



The star gateway portals that are located in space use hyper-drive technology to create slip stream corridors that can bend space and time in order to create a quantum door way linking two locations together in space for teleportation purposes, these gateways can also be utilized to travel back in time and forward in time to the future without creating timeline collapse or altering the fabric of the space time continuum. There are buffer fusion technologies installed on portal gateways so unauthorized beings cannot travel backward or forward in time so no negative timelines can be created. Essentially gateway portals either can create wormholes or black holes depending on how they are programmed for their primary purposes.

# Star Gateway Portals



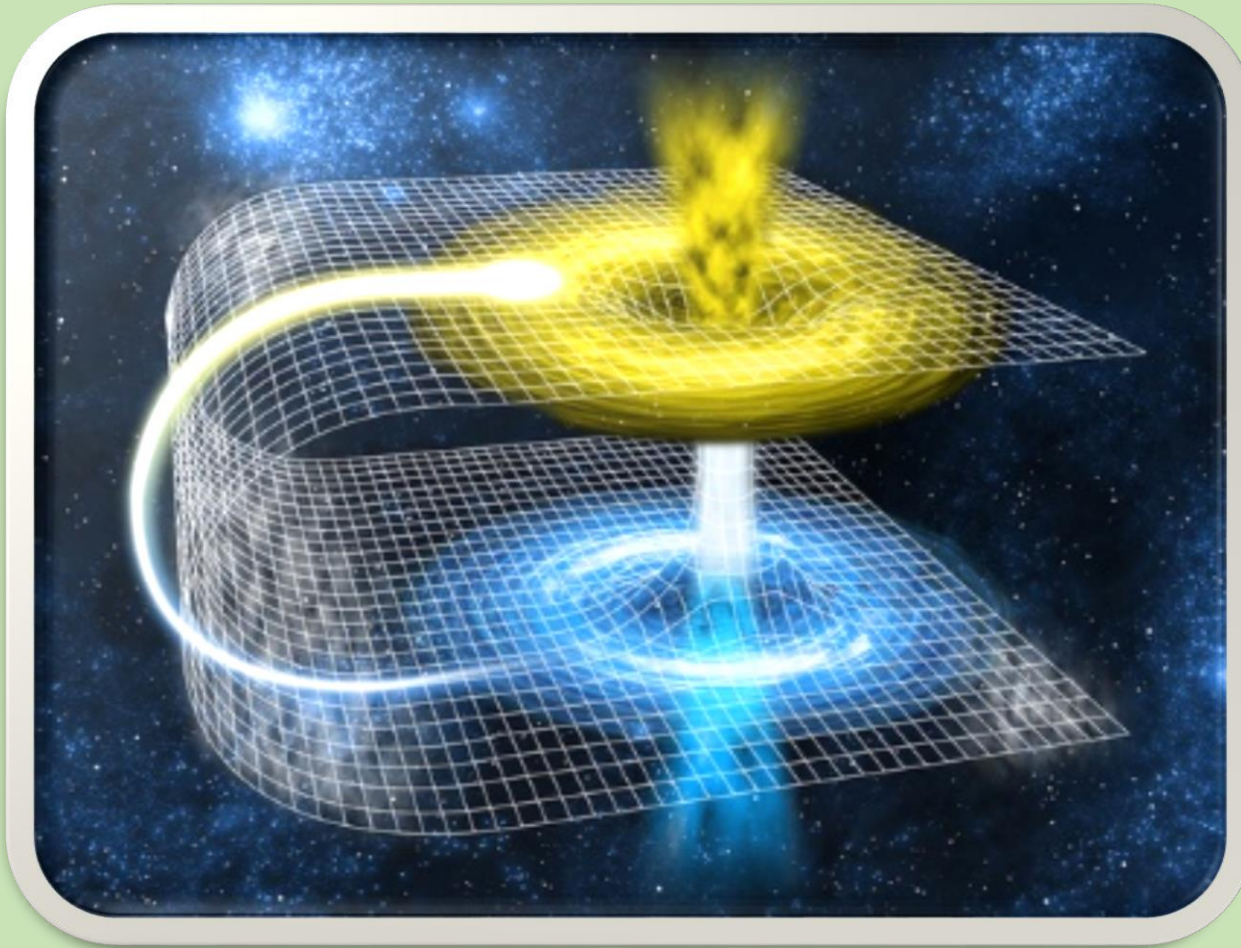
There are some star gateway portals in the underground cities of planets especially on Earth. These portals are hidden in the underground tunnels in the Agarthan Network civilization which exists under Mount Shasta in California. The Agarthan Network is a break away Earth civilization that has existed on this planet for many generations now. Some of the gateway portals open up by creating black holes in space and time, these black holes are technology generated and they can allow large amounts of things or people to be teleported to other places in the universe at quicker speeds than worm holes can, but worm hole technology is much stable and safer as it is created naturally from the plasma and solar energy of the universe.

The above image is what the Amaru Muru star gateway technology looks like which is located in the Maldek tunnels under Amaru Muru. On the left hand side is the worm hole star gate portal and on the right hand side is the black hole portal way. The Amaru Muru Star gateway portal exists in Peru near Lake Titicaca.





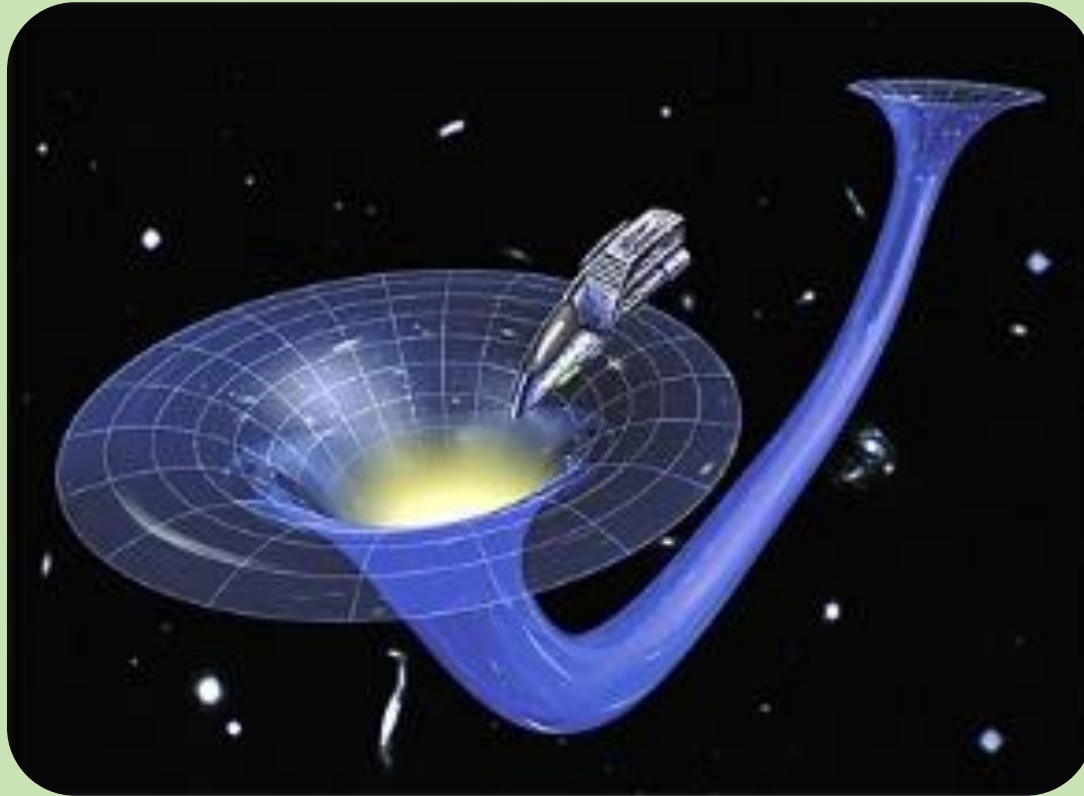
# Star Gateway Portals



**Time folding in on itself in order to create a wormhole in space.**



# Star Gateway Portals



A wormhole, or Einstein-Rosen Bridge, is a hypothetical topological feature that would fundamentally be a shortcut connecting two separate points in space-time that could connect extremely far distances such as a billion light years or more, short distances, such as a few feet, different universes, and in theory, different points in time. A wormhole is much like a tunnel with two ends, each in separate points in space-time.

For a simplified notion of a wormhole, space can be visualized as a two-dimensional (2D) surface. In this case, a wormhole would appear as a hole in that surface, lead into a 3D tube (the inside surface of a cylinder), then re-emerge at another location on the 2D surface with a hole similar to the entrance. An actual wormhole would be analogous to this, but with the spatial dimensions raised by one. For example, instead of circular holes on a 2D plane, the entry and exit points could be visualized as spheres in 3D space.





# Star Gateway Portals



**Worm hole opening up  
in space. Wormholes  
are naturally made in  
space time.**



# Star Gateway Portals

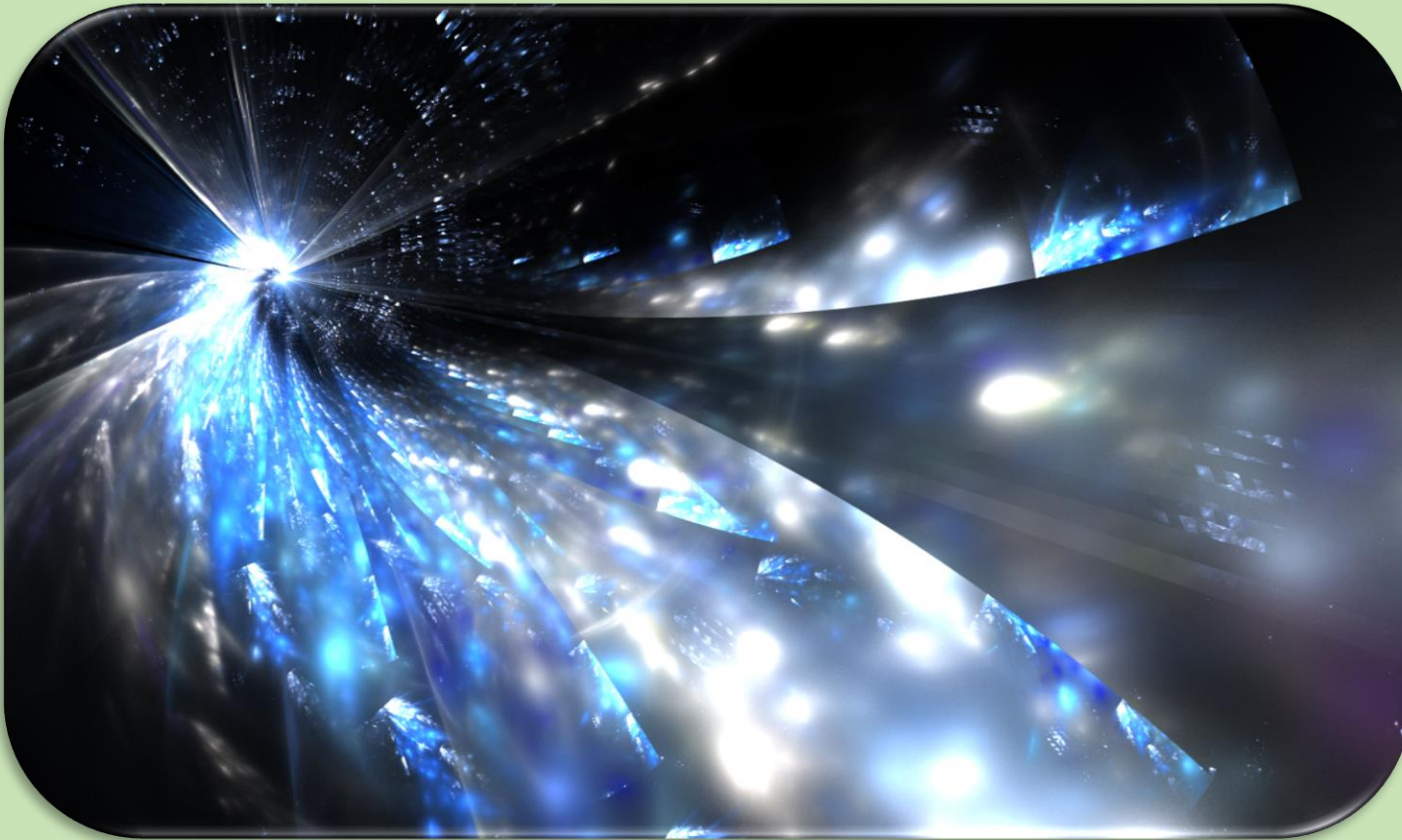


**Space ship preparing to  
enter into a wormhole.**





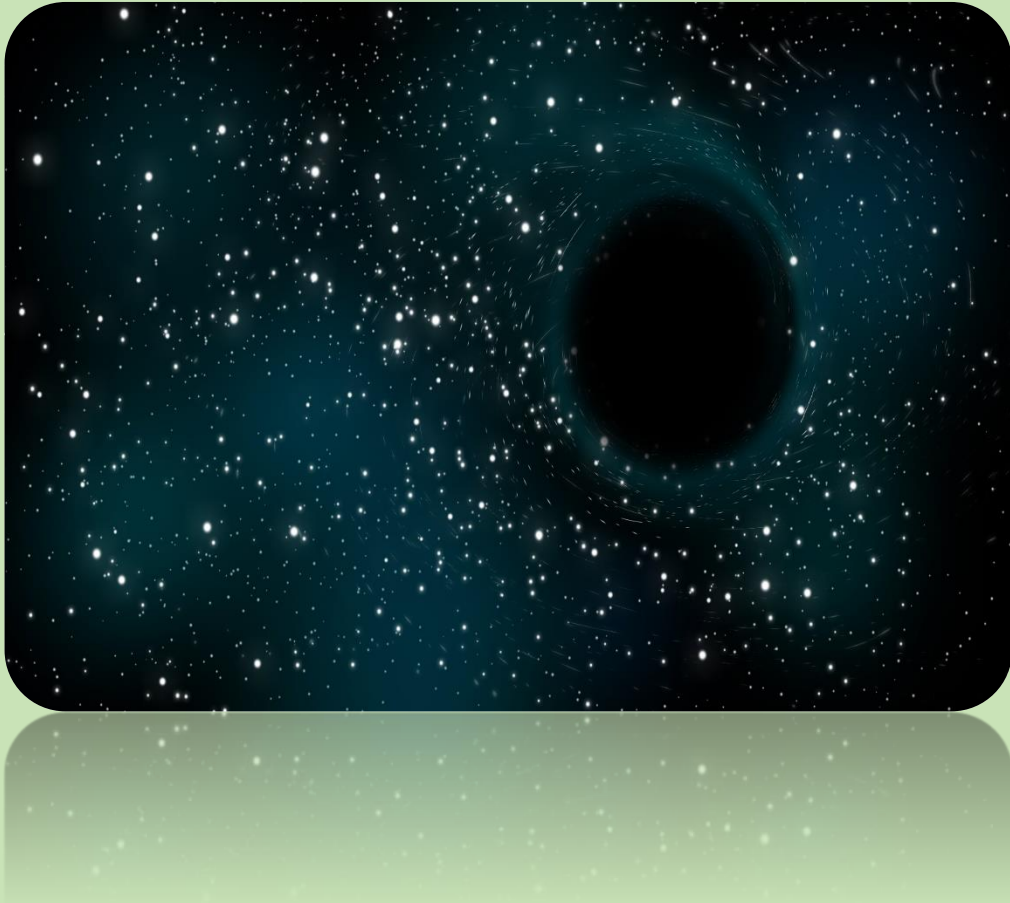
# Star Gateway Portals



**Wormhole corridor through  
which ships travel out in  
space.**



# Star Gateway Portals



A black hole opening up in space, the black holes are made up of dark antimatter energies and are less stable than worm holes. The black holes are rare to be seen out in space since they are artificially made with technology.

What is a Black Hole?

A black hole is a place in space where gravity pulls so much that even light can not get out. The gravity is so strong because matter has been squeezed into a tiny space. This can happen when a star is dying. Because no light can get out, people can't see black holes. They are invisible. Space telescopes with special tools can help find black holes. The special tools can see how stars that are very close to black holes act differently than other stars.

How Big Are Black Holes?

Black holes can be big or small. Scientists think the smallest black holes are as small as just one atom. These black holes are very tiny but have the mass of a large mountain. Mass is the amount of matter, or "stuff," in an object. Another kind of black hole is called "stellar." Its mass can be up to 20 times more than the mass of the sun. There may be many, many stellar mass black holes in Earth's galaxy. Earth's galaxy is called the Milky Way. The largest black holes are called "supermassive." These black holes have masses that are more than 1 million suns together. Scientists have found proof that every large galaxy contains a supermassive black hole at its center. The supermassive black hole at the center of the Milky Way galaxy is called Sagittarius A. It has a mass equal to about 4 million suns and would fit inside a very large ball that could hold a few million Earths.

How Do Black Holes Form?

Scientists think the smallest black holes formed when the universe began. Stellar black holes are made when the center of a very big star falls in upon itself, or collapses. When this happens, it causes a supernova. A supernova is an exploding star that blasts part of the star into space. Scientists think supermassive black holes were made at the same time as the galaxy they are in.

If Black Holes Are "Black," How Do Scientists Know They Are There?

A black hole can not be seen because strong gravity pulls all of the light into the middle of the black hole. But scientists can see how the strong gravity affects the stars and gas around the black hole. Scientists can study stars to find out if they are flying around, or orbiting, a black hole. When a black hole and a star are close together, high-energy light is made. This kind of light can not be seen with human eyes. Scientists use satellites and telescopes in space to see the high-energy light.

Could a Black Hole Destroy Earth?

Black holes do not go around in space eating stars, moons and planets. Earth will not fall into a black hole because no black hole is close enough to the solar system for Earth to do that. Even if a black hole the same mass as the sun were to take the place of the sun, Earth would still not fall in. The black hole would have the same gravity as the sun. Earth and the other planets would orbit the black hole as they orbit the sun now. The sun will never turn into a black hole. The sun is not a big enough star to make a black hole.



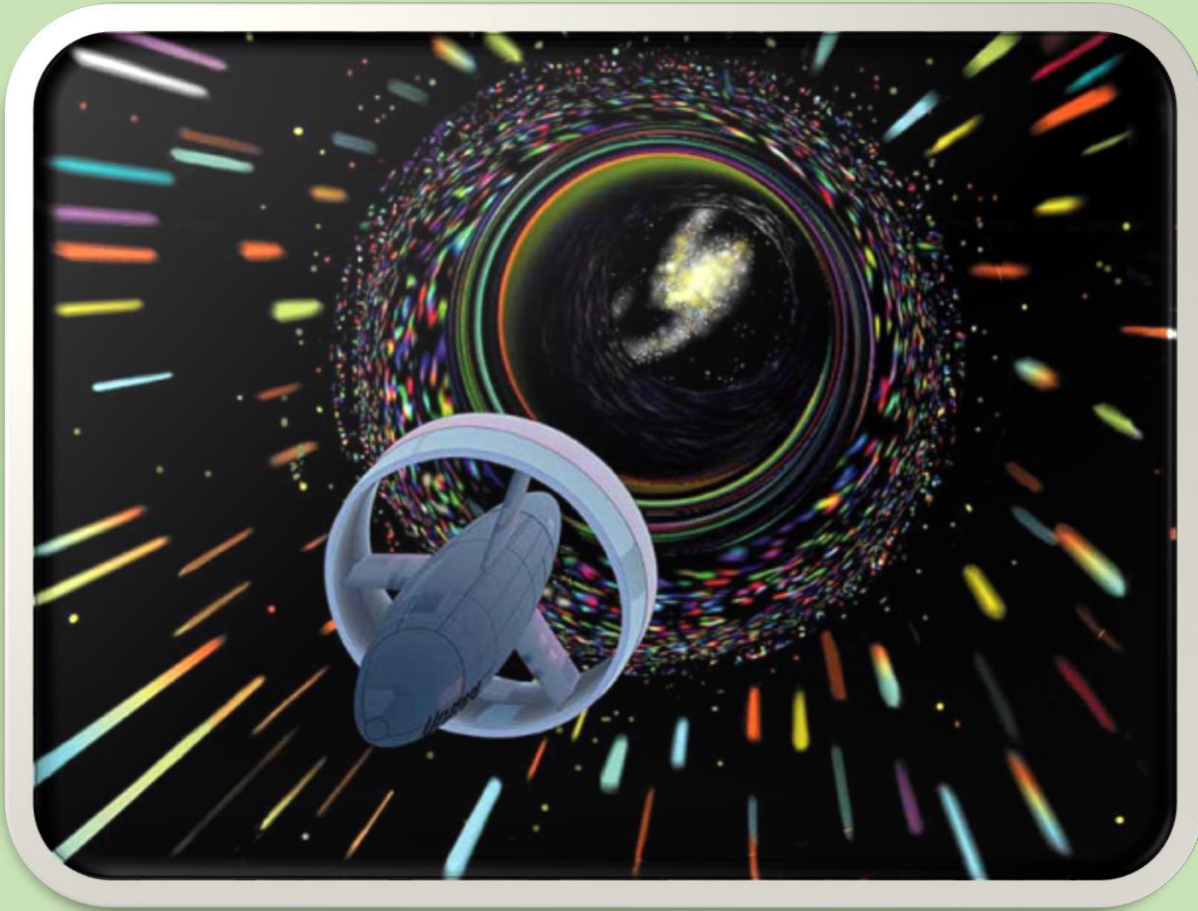
# Star Gateway Portals



**A ship creating and opening a black hole in outer space.**



# Star Gateway Portals



**A space ship travelling in the  
black hole antimatter corridor  
out in space.**





# Star Gateway Portals



**There are good luck portal ways located all over the planet Earth, these portals often have sacred geometry symbols on them that create powerful manifestation energies that can help people to manifest what is for their highest good in this lifetime.**



# Star Gateway Portals

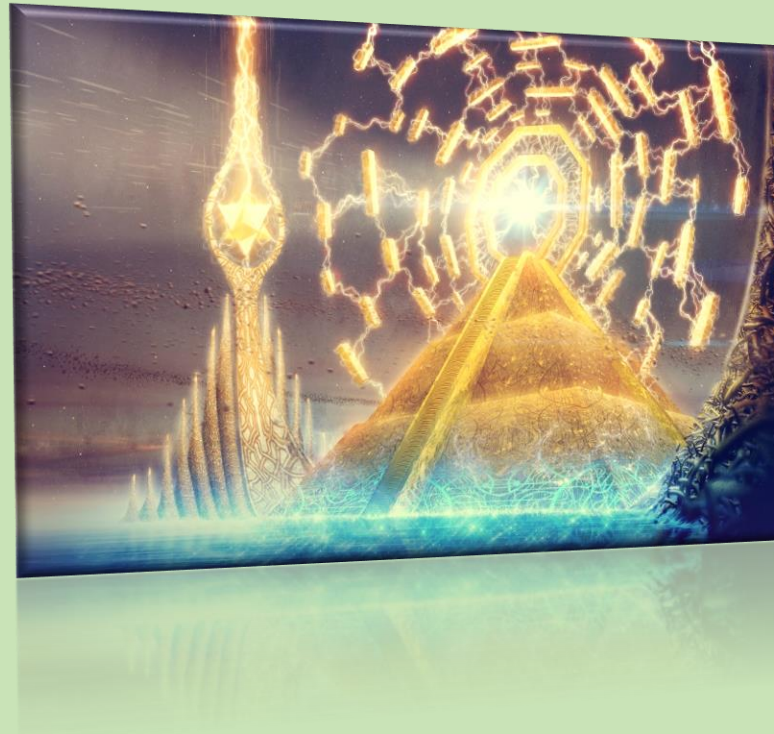


**Higher dimensional extraterrestrial races use star gateway portals all the time to travel to various planets and galaxies on a regular basis. This is an easy and quick way of transportation to get around in the universe for advanced civilizations.**





# Star Gateway Portals

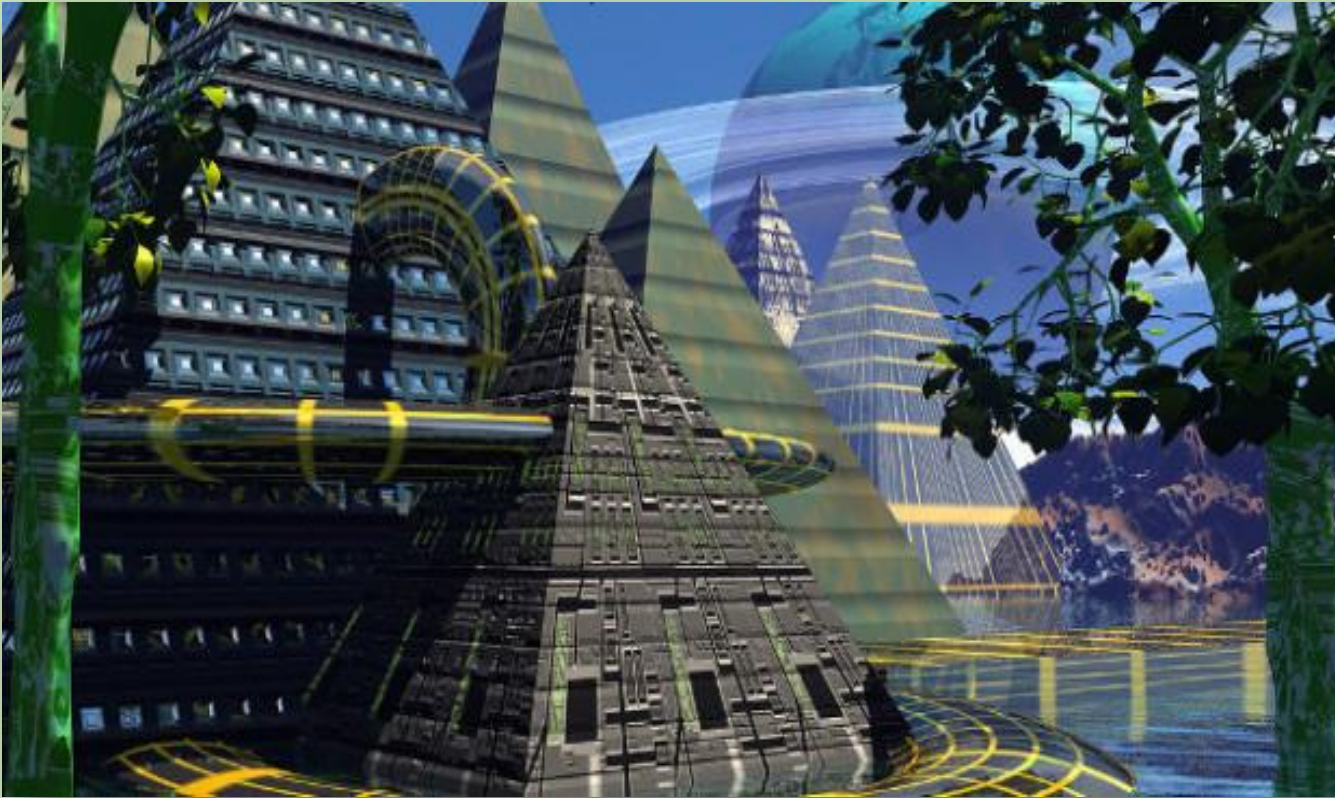


There are pyramid gateway portals that can help people to astral travel to other higher dimensions in the universe and also teleport beings from one planet to other worlds as well as distance galaxies in outer space. These types of gateway portals were built during the time of ancient Egypt and they are still being used today by advanced civilizations on other planets for teleportation purposes. Pyramid portals are also universal knowledge library repositories so they contain information and the secrets of the universe.

The pyramid portals are also capable of acting as vortexes and harnessing solar energy to create electricity so they are power generators creating the energy sources sending them out in space to power ships and space stations as well as receiving energy back from sources like stars and the sun to power structures on planets.



# Star Gateway Portals

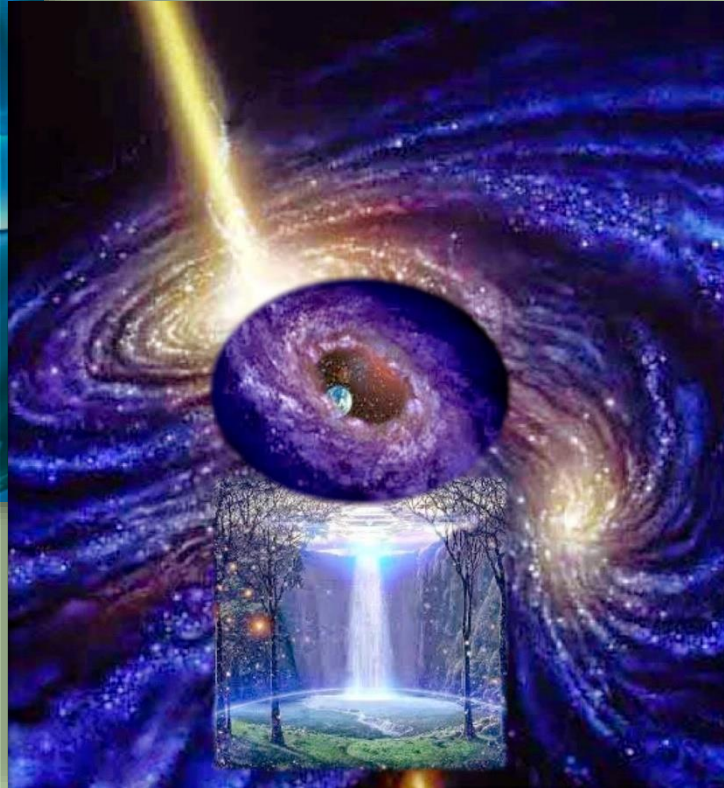
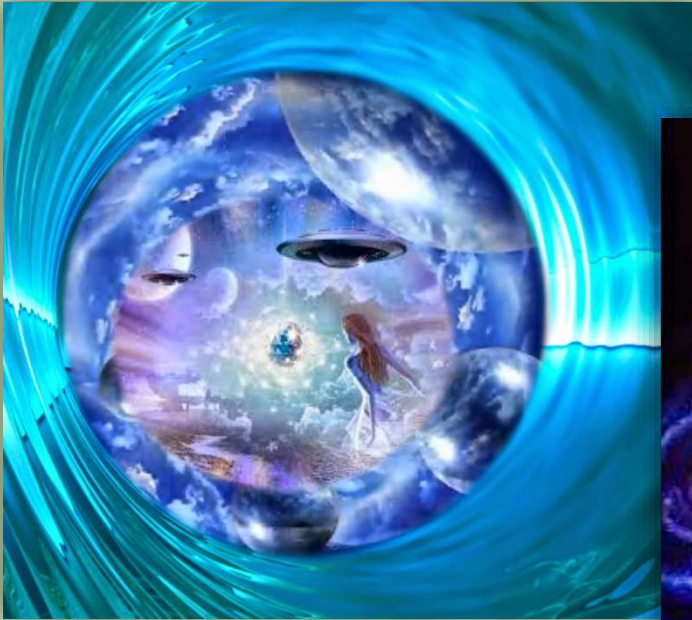


**Many advanced civilizations build cities in the shapes of pyramids as this amplifies the planetary energies as well as provides healing and peaceful energies in the homes and the cities that the ET races live in thanks to the shape of the triangle pyramids.**





# Star Gateway Portals

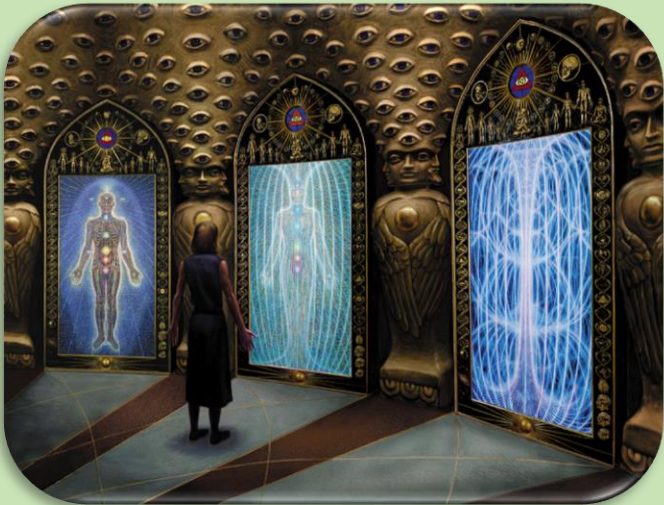
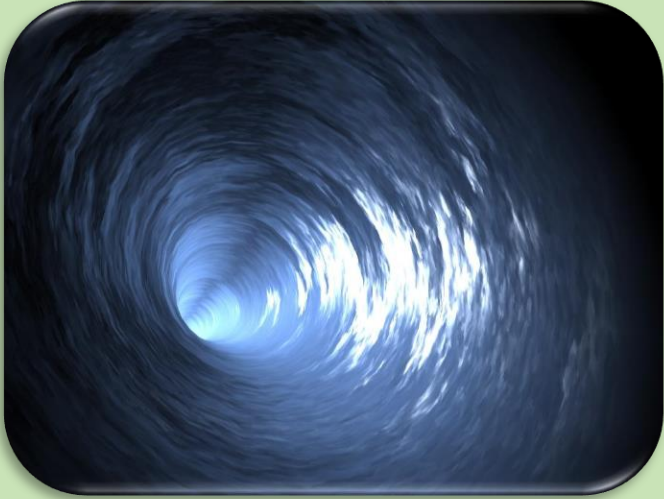


## Soul Mirrors

Some souls enter 3D to 5D and higher dimensional worlds through wormholes and sun portals out in space. There are guardians which are located on space stations beside wormholes to determine whether entrance will be permitted for the incarnating being onto a planet or a specific star system. This all depends on the levels of the vibrational frequencies that the incoming soul has and what kind of a dimension they are ready to inhabit during each lifetime.



# Star Gateway Portals



The three images on the left-hand side show some of the examples of how these soul mirror portals look like, one is a blue/white wormhole, the other are various timeline and planetary mirror portals to various galaxies, planets, and star systems on a space station that is located near a wormhole, and the third mirror leads to one specific timeline on one planet.





# Star Gateway Portals

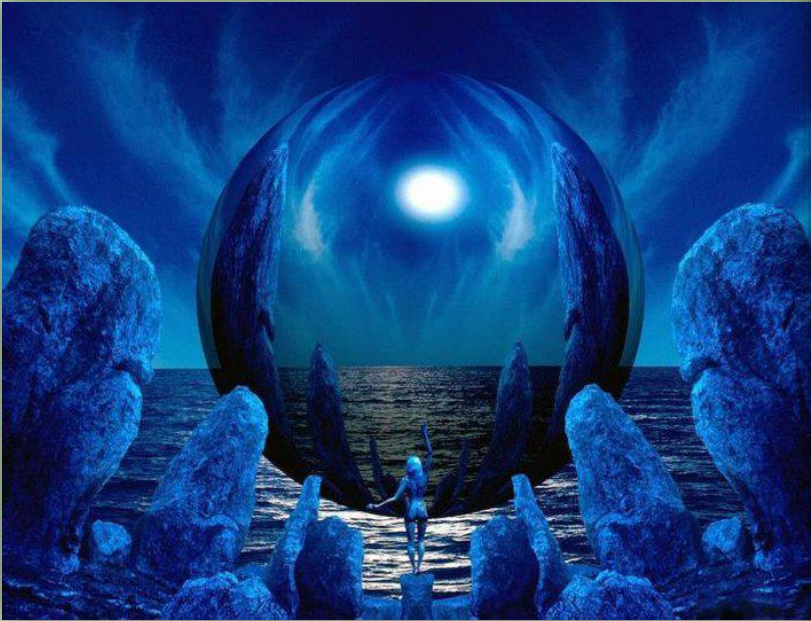


Adreal is one of the female soul timeline mirror guardians that is assigned to one of the space stations near a wormhole portal which is located close to the Earth. This guardian monitors the different incoming incarnate souls who wish to experience life on Earth and Adreal helps to decide if the souls can enter Earth or not based on their levels of vibrational frequencies, sometimes the levels are too low or high in a dimensional frequency so the souls cannot enter Earth depending on the situation so they will then go to live on other planets or galaxies based on their soul paths, missions, and lessons they need to learn in life.

Adreal has glowing blue/green eyes that are like a thousand bright suns, and her eyes have the power of two super nova's so she can change space time and timelines in galaxies as needed.



# Star Gateway Portals



Advanced and ascended beings can create energy bubbles called orbs around themselves and become smaller in matter so they can quickly travel off world and to other planets or galaxies as pure energy without needing space ships to do this.



# Star Gateway Portals



Many fifth dimensional beings and up are able to teleport themselves to different parts of a planet or even off world by using their own life force energy in beaming themselves to different locations by focusing with visualization on the location where they want to go and inputting the coordinates of that place with their mind into the energy field around them, thereby teleporting to those desired points of reference within minutes.

Some higher dimensional beings exist in light bodies where they are no longer in corporeal form but living as light energy, these beings can still manifest human physical bodies when they need to but they do not have to live in them.

There are many natural star gateway portals on planets as well as vortexes that allow beings to travel through them, these portals are made up of the planetary living energies and no technology is used to create them. The natural portals are usually invisible so beings need to be able to be psychically attuned to the planetary energies in order to be able to find and access these star gateways.

# Star Gateway Portals



This is a crystalline matrix wormhole light portal through which soul light keys that help to keep the goodness of the light shining on planets travel through in order to incarnate to planets, as well star travelers and guardians also enter these wormholes in order to travel to far away galaxies at high energetic frequencies.

The Soul Light Keys are beings who balance the light quotients on planets so the dark cannot outweigh the light, light keys help to prevent disasters, stop wars, etc. as well they bring peace and unity to the worlds that they live on in order to create positive changes in the timelines so worlds have a chance to successfully ascend to higher dimensional levels of realities.

The crystalline wormholes are sources of healing light and they can cure diseases, emotional issues, etc. Often times people will see these crystalline portals during Quantum Healing Hypnosis sessions or any other types of healing modalities where the soul receives universal knowledge about what it is in its lifetime(s).

